

Family to Family Outcomes

Guilford County Department of Social Services

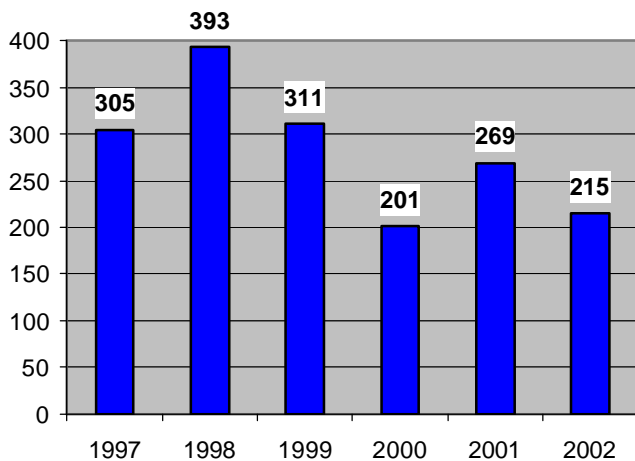
January 2003

F2F Outcomes: Looking at Change Over Time

One of the best methods for showing improvements (or lack there of) in outcomes is comparing data from the time before an intervention to the present. The following data demonstrates those comparisons for key F2F outcomes:

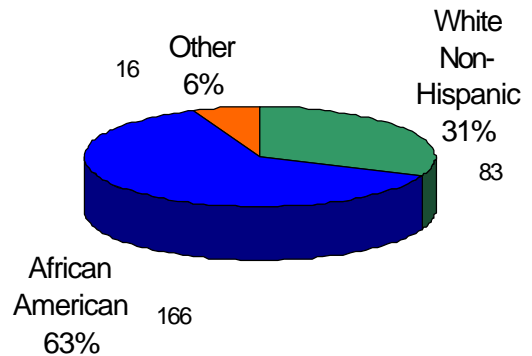
Reduce rate of placement

Children Entering Care for the First Time in Guilford County

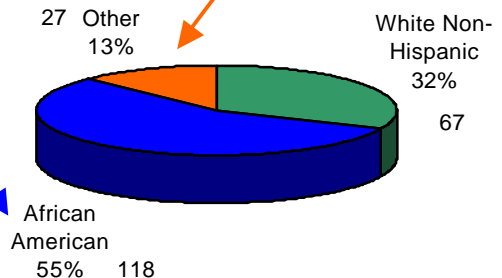


Reduce race, gender, or age disparities in each F2F outcome

Race of Children Entering Care for the First Time FY 2001



Race of Children Entering Care for the First Time FY 2002



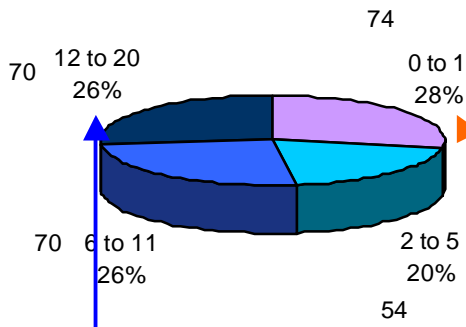
F2F Outcomes Report presented by:

Self-Evaluation Team (SET)

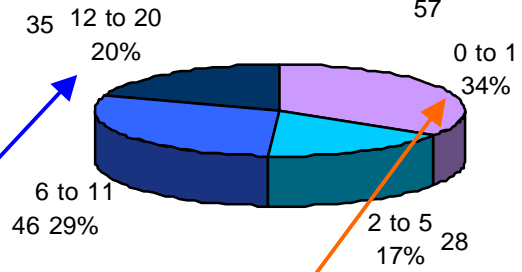
Susan Brady (co-chair)
 Joy Stewart (co-chair)
 Mae Bullock
 Kathi Cupo
 Sue Davis
 Mike Herzing
 Robert McEntire
 Heather Skeens
 Bill Thornton ?

From FY 2001 to FY 2002, the proportion of African-Americans entering care decreased from 63% to 55%. However, the proportion of white children only increased slightly while "Other" race children (which is mostly children of Hispanic ethnicity) increased by 7%, suggesting either a real population shift or a racial coding change.

Age Categories for Fiscal Year 2001



Age Categories for Fiscal Year 2002

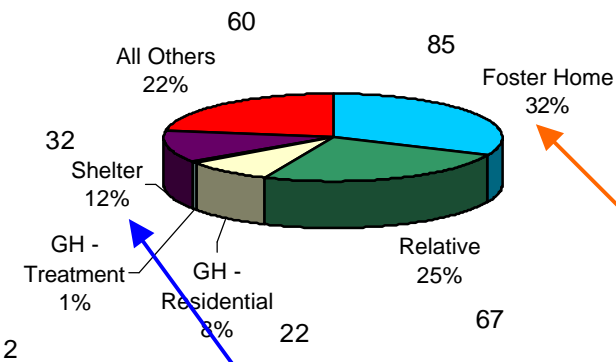


Note the 6% *decline* in the percentage of children aged 12 to 20 entering care from FY 2001 to 2002.

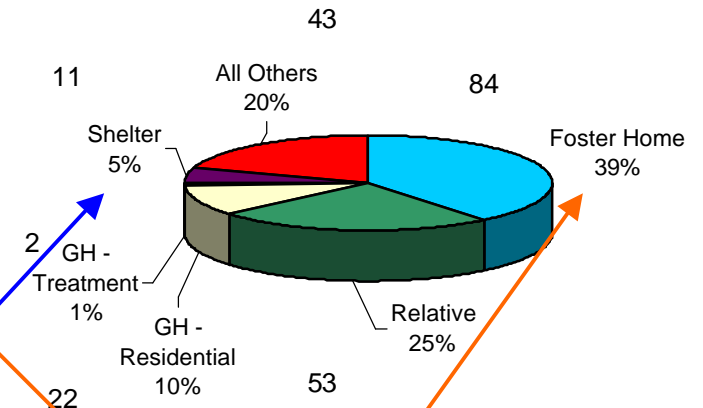
Note the 6% *increase* in the percentage of children aged 0 to 1 entering care.

Reduce the number of children in institutional care

Initial Placement Types FY 2001



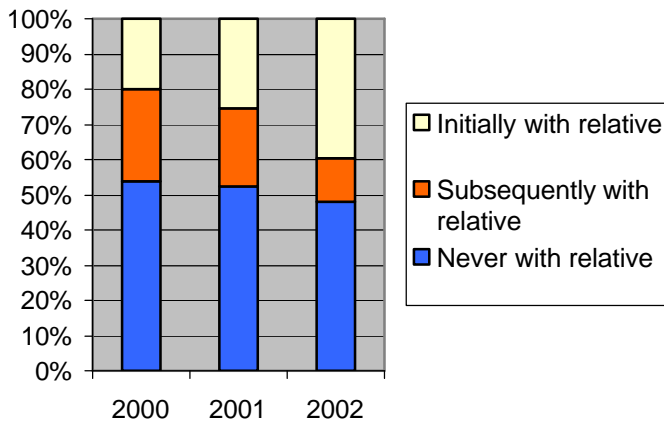
Initial Placement Types FY 2002



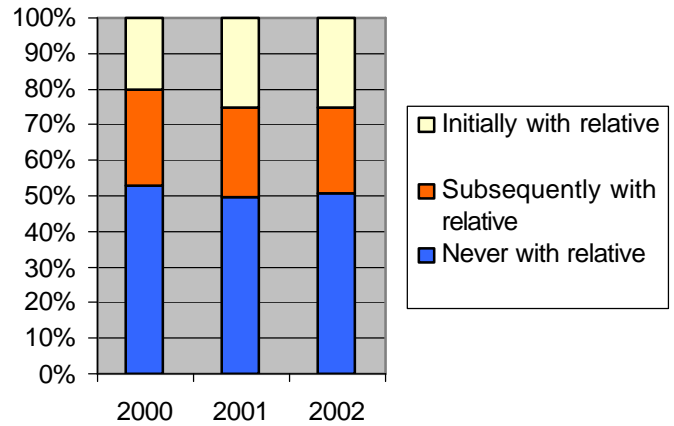
The use of shelters as an initial placement declined by more than half from 12% in FY 2001 to 5% in FY 2002!

Note the 7% increase in the use of family foster homes as initial placements from FY 2001 to 2002!

Relative Placements by FY - 12/01



Relative Placements by FY - 10/02

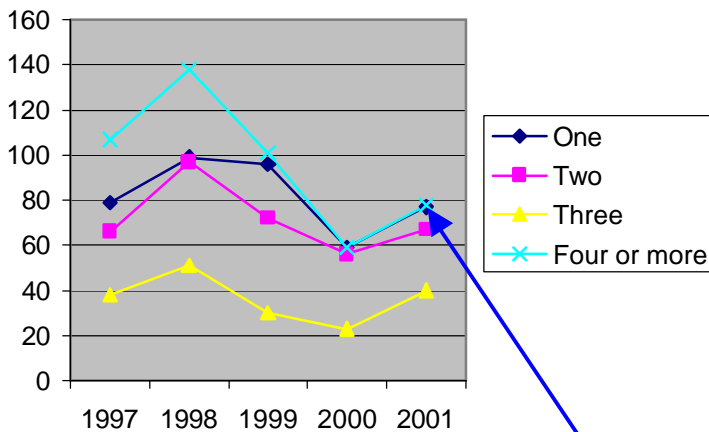


A Note On Siblings: For the 50 sibling sets entering licensed facilities in FY 2002, Guilford County placed 89% of siblings together, either the whole sibling set (76%) or part of the set (24%). Way to go!!!

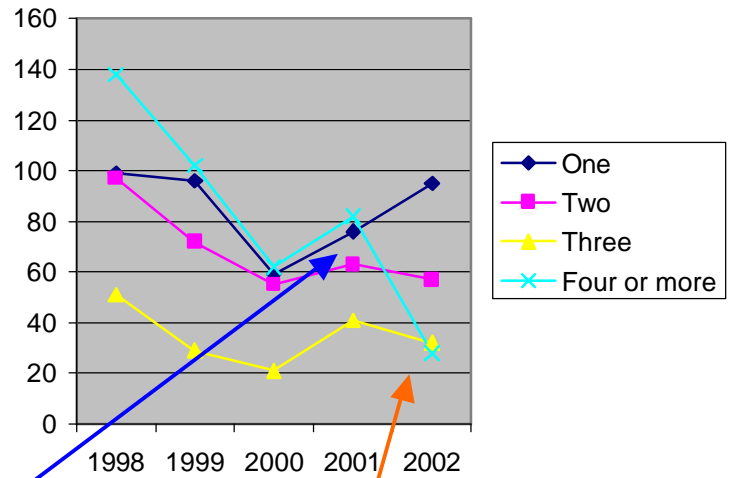
The percentage of those children initially and subsequently placed with relatives continues to hover around the 50% mark!

Reduce placement moves for children

Number of Placements by Fiscal Year - 07/02



Number of Placements by Fiscal Year - 10/02



From July to Oct 2002, the number of children entering FY 2001 with four or more placements held steady but remains higher than the rest of the state.

The rate of placement moves for children entering FY 2002 appears to be slower than FY 2001's rate!